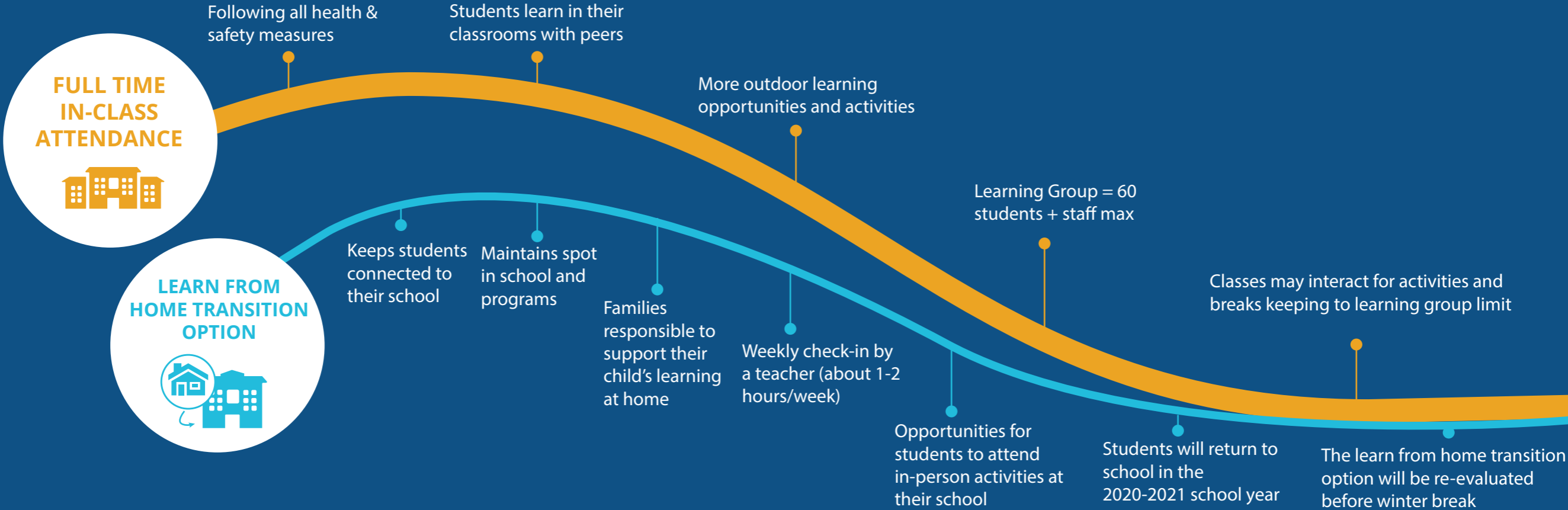


# ELEMENTARY SCHOOL RETURN OPTIONS



**DISTRIBUTED LEARNING**

Families are the home facilitator in their child's education. A teacher provides program material, assesses students' work and provides feedback.

Students supervised at home while following the BC curriculum.

Children do not attend a school's classes or activities

Students must register



**HOME SCHOOL**

Full educational program is done at home, usually with the family assuming full responsibility for their child's learning

Families must inform their school of their decision to home school

There are no assignments or assessments from teachers



**HOME BOUND EDUCATION**

This educational program is for students who are unable to attend school due to a medical condition.

A student must be diagnosed by a doctor and have a letter from the medical practitioner making the diagnosis.

Families can contact their school principal for more information.